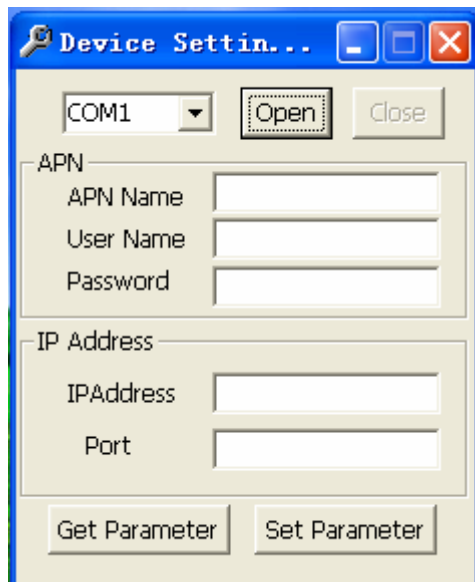
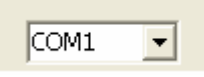


## Manuals for ConfigTool

This software **<ConfigTool>** is used to set up **IP** address, **APN** and **Server Port** of GPS Device, only when **IP**, **APN** and **Server Port** are installed accurately, GPS Device can communicate with testing software **<YWGPSDemo>**.

1. Use the RS-232 series line in the GPS Device sample, then connect GPS Device with any RS-232 port on the testing computer.
2. Make sure GPS Device has equipped SIM card and power supply. SIM card and power method of installation, please refer to **<installation menu>**.
3. Run **<ConfigTool>**, then the interface as follow:



4. Select a serial port in , this series port is the just one of the testing computer which was connected with GPS Device. Press **【Open】**, the relevant series port will open. It's cannot be open if the select series port is not exist or

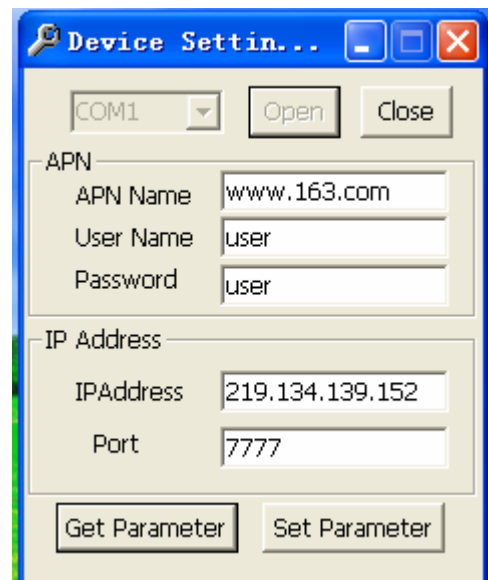


occupied.

5. Press **【Close】** ,if succeed, it will show: close the Serial Port succeed.



6. Fill in **APN** and **IP** address respectively. Please ask your GPRS provider for **APN**. Most of GPRS providers don't need **User Name** and **Password**. Please fill in if your provider needs, if not, let it vacancy. The **IP** address is effective and can be visited through GPRS. The **IP** may be public address; it could also be GPRS operators' internal addresses. Please ask your GPRS provider. The



**Port** is a discretional integer which should be bigger than 1024, but smaller than 65535.

7. Click **【Set Parameter】** , then wait for 5 seconds, then it will show **Setting Succeed**.

8. After set up GPS Device, click **【Get Parameter】** ,



5 seconds later, relevant parameters will be re-read.



9. When GPS Device disconnect with RS-232 series port, all the setting work is over.

10. And then please refer **<Menu>** in folder **< TestingDemo>**, starting testing work.