



Enhanced Blue Tracker

User Manual



深圳市有为信息技术发展有限公司

Shenzhen Yuwei Info&Tech Development Co., Ltd



Content

1. GENERAL	3
2. PACKING LIST	3
2.1 STANDARD	3
2.2 OPTIONAL	3
3. CONFIGURATION	5
3.1 CONNECTION	5
3.2 OPEN COM PORT	5
3.3 SET PARAMETER	7
3.3.1 SET APN	7
3.3.2 SET IP AND PORT	8
3.3.3 SET TIME ZONE	9
3.3.4 SET TIME INTERVAL	9
3.3.5 SET VEHICLE INFORMATION	10
4. INSTALLATION	11
4.1 WIRING DIAGRAM	11
4.2 ATTENTION	11
4.3 INSTALLATION (12V/24V)	12
5.SPECIFICATION	14
6.FAQ	15
7.WARRANTY	16
8. CONTACT US:	16



1. General

The Enhanced Blue GPS Tracker is the full-function vehicle positioning terminal with GPRS and SMS dual channel. By connected with extra accessories, it supports TTS voice broadcast, Driver Analyzer via IC&RFID card, two-way communication, multi-photograph record, oil consumption detector, LED advertisement publishing, etc.

2. Packing List

2.1 Standard

①Main Unit	1pcs
②GSM Antenna	1pcs
③GPS Antenna	1pcs
④Cable	1set
⑤User Manual	
⑥Warranty Card	
⑦Certificate Of Approval	



2.2 Optional

- ① Relay



② Speaker



③ Digital Camera



④ LCD Display



⑤ Fuel Consumption Detector



⑥ Temperature Detector



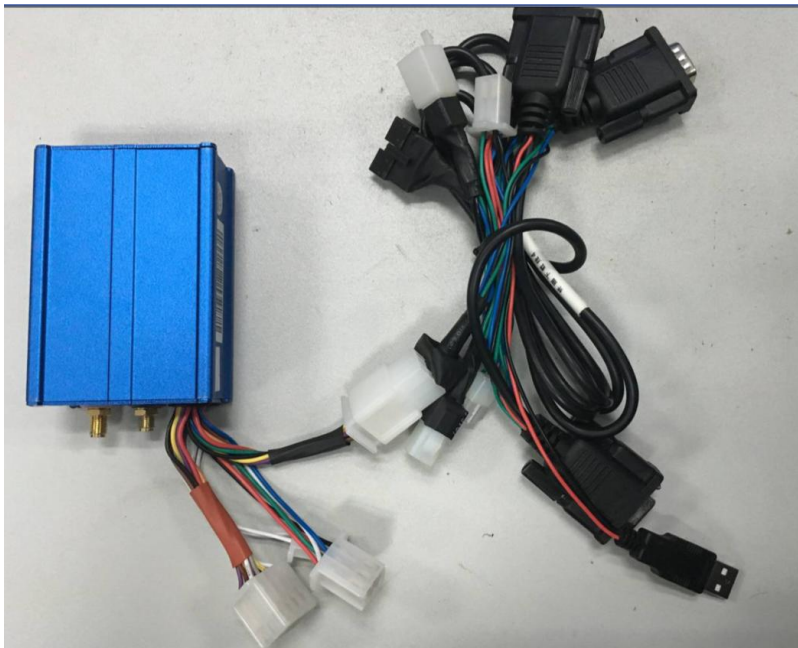


3. Configuration

3.1 Connection

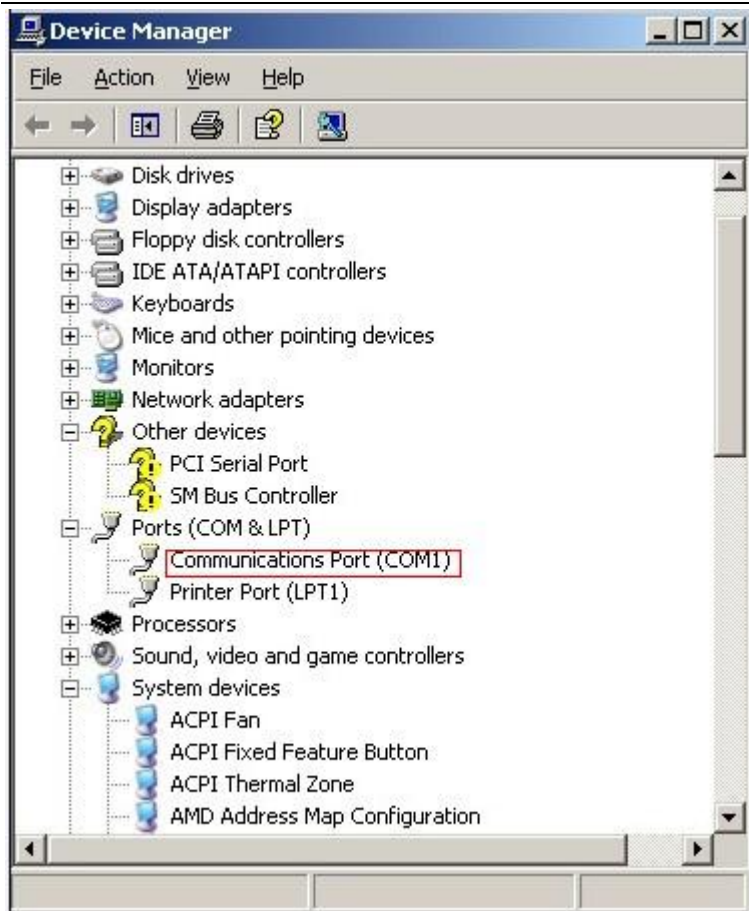


All-in-one configuration cable



3.2 Open Com Port

After finished all the connection, you need to Set IP and APN. But before this step, you need to open the Port as follow,



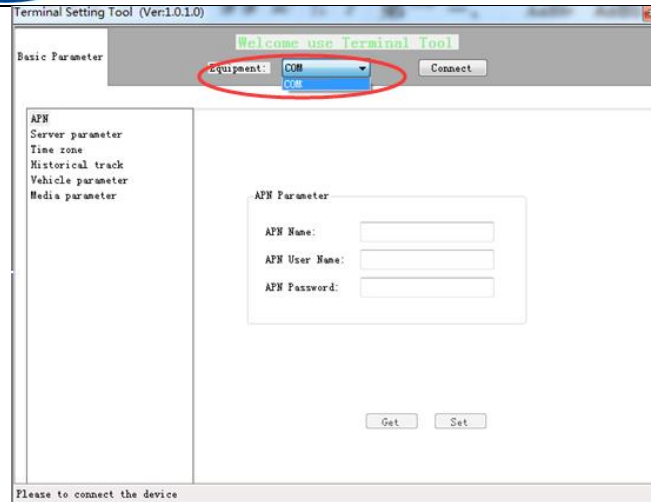
After all above steps, insert SIM card and run this software



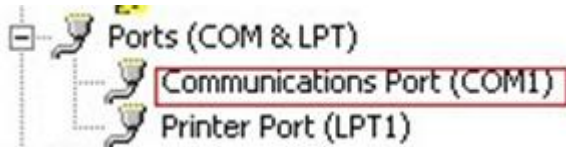
in appendix, and create a desktop shortcut for convenience.



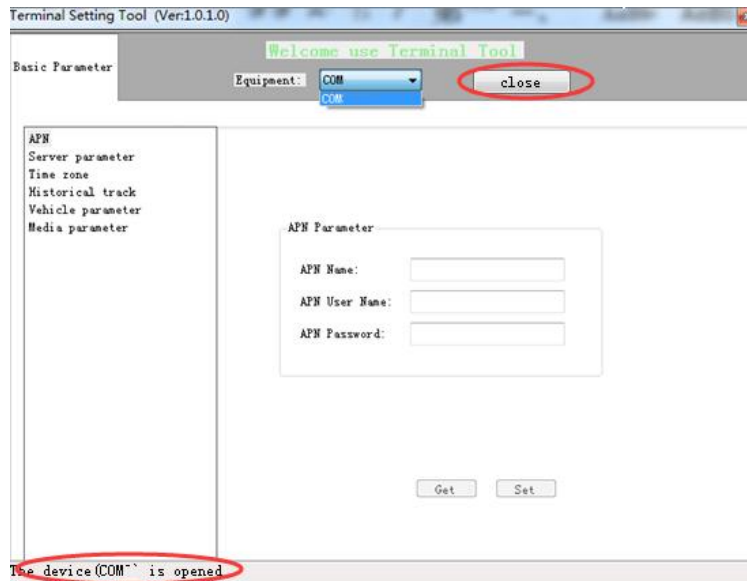
.Click and do as follow steps,



Keep the same Comport number as you open,



Then click , if open comport successfully, it will show as below,




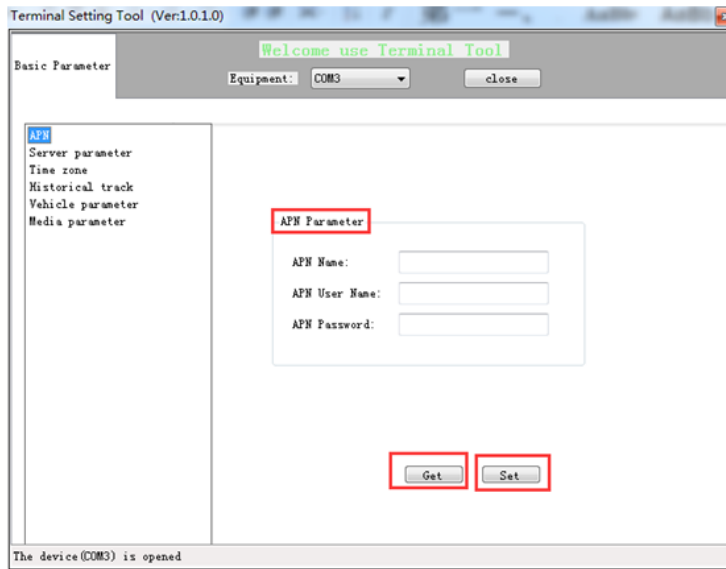
3.3 Set parameter

3.3.1 Set APN

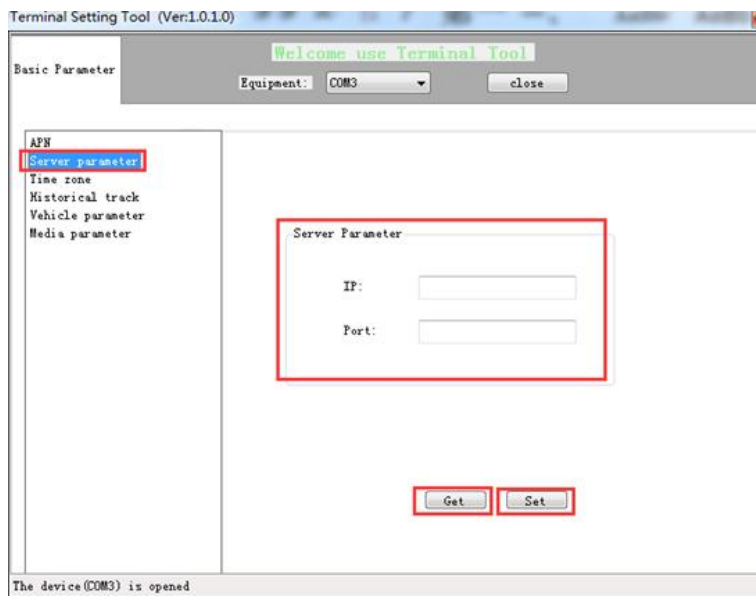
Click “APN” and input APN, after that click “set”, if it successfully, it will show “Set OK”,



if it's wrong, please set it again, or you can click  to check the parameter you have set.

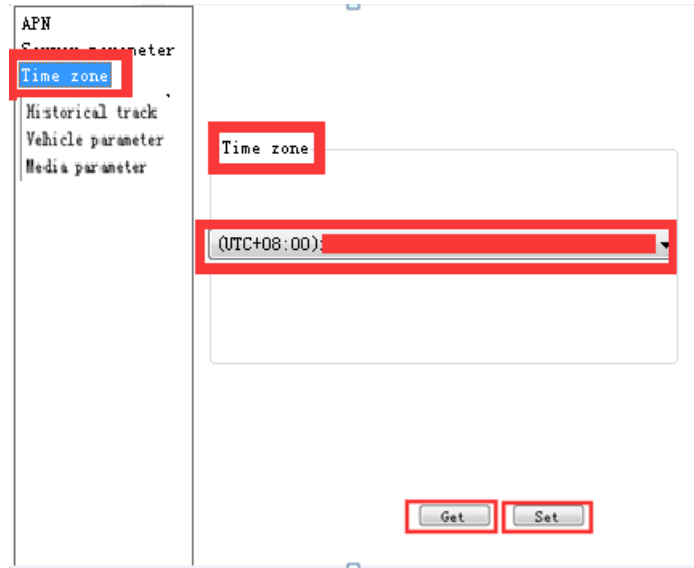


3.3.2 Set IP and Port

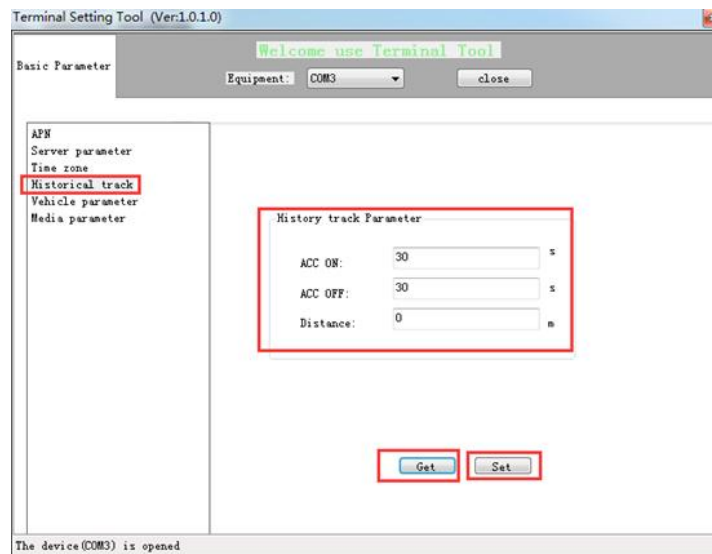




3.3.3 Set Time Zone

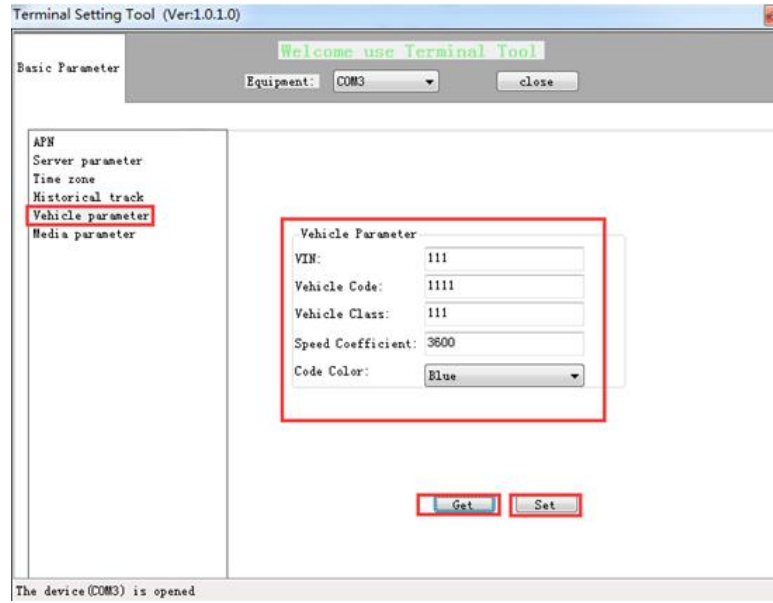


3.3.4 Set Time Interval





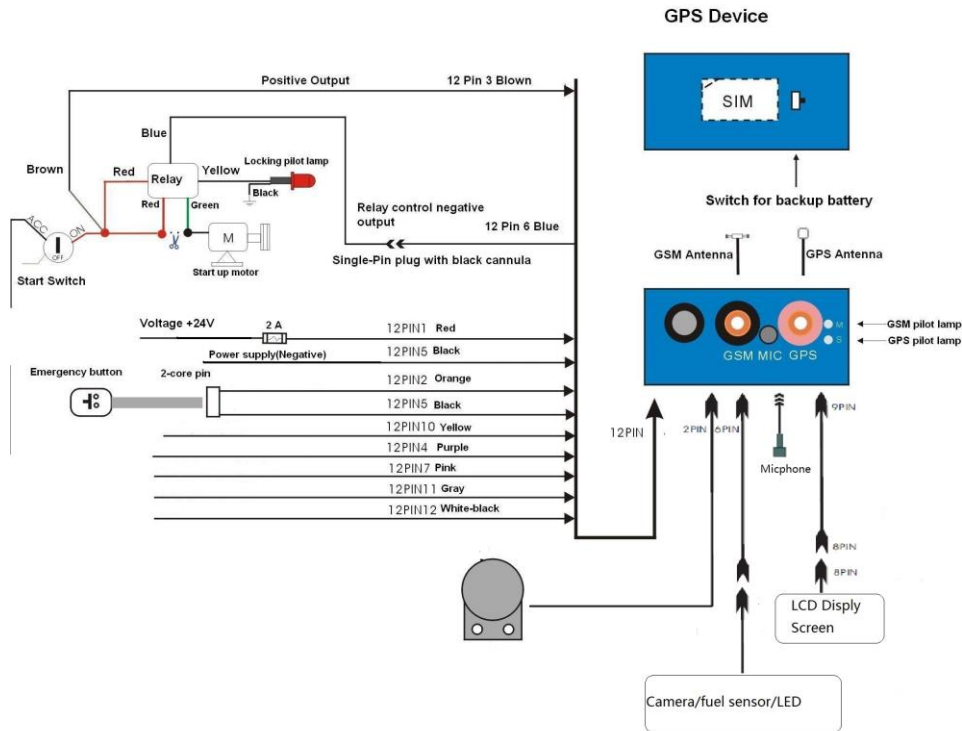
3.3.5 Set Vehicle Information





4. Installation

4.1 Wiring Diagram



4.2 Attention

- Please make sure the SIM card should be GSM network system and GPRS function must be available. SMS function should be active if necessary.
- Please choose a proper place to install the device. Don't install the device where directly over the surface of the metal cover; don't place the device where can easily get wet and rain.
- All the connecting should meet the standard of installation and all the bare wire should be wrap by the insulation pipe.
- If relay is needed, please choose the suitable one(12V/24V) for the right vehicle.
- As the fuse can protect both for the device and vehicle, you need to connect the fuse if you cut short of the device wire before installation.



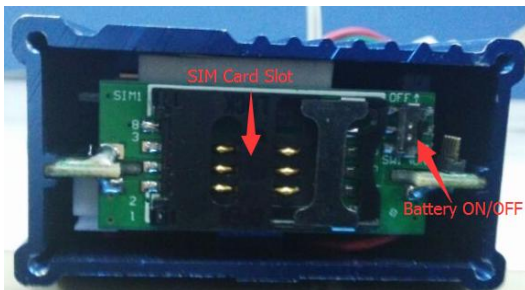
4.3 Installation (12V/24V)

(1) 【Choose a best space for the device】

- It should not affect the normal operation of the driver;
- It should not affect the appearance and function of the vehicle itself ;
- Make sure not to shower by the rain or water and it strictly prohibited by water immersion;
- All kinds of cables shall ensure to be strapped by the insulation pipe; prevent being broken even short circuit;
- It should avoid direct sunlight
- Device should be fixed by screw or lock up.

(2) 【ON/OFF of Backup battery】

- Switch to “ON” means battery is open;
- Switch to “OFF” means battery is closed;
- Backup battery factory capacity is no less than 70% ;
- For the first time installation, Backup battery will automatically charge to the saturated state;
- Attention : Don’ t switch on the battery before installation or device is not in use



(3) Installation of the GSM antenna

- Install position should be near to car window, as GSM can receive signal well
- Install position should be hidden in order to avoid destroy
- Antenna and metal panel should have 5cm distance that car can receive signal well even in high speed.
- Paste the antenna after choose the suitable install position.(For the D type antenna, paste it on the wheel)
- Do not crush the antenna cable, or snap it
- Attention: Use handset check the GSM signal after installation, make sure 3G signal should be above 19
Below 19 should check GSM position.



(4) 【GPS antenna installation】

- Connect antenna & Gps tracker, do not use metal cover antenna, make sure can see 60° sky, gradients should be lower than 15°, better to put antenna near front .back windows or top of the car.(do not install if back window have car window protection film)
- Antenna (arc side) should be face to the sky, antenna do not use other material to cover it;
- Antenna bottom (flat, have word) have magnet which can stick on the car, better use double adhesive tape fixed it)
- Do not crush the antenna cable, or snap it

【Status of GPS&GSM signal light】

Red (GPS signal light) :

- 5 seconds flicker once indicates no satellite signal
- 5 seconds flicker three times indicate have satellite signal which reach 4 star degree
- Red light indicate GPS antenna open circuit, pls check GPS antenna connection or cut off it.



Yellow (GSM Signal light):

- 5 seconds flicker once indicate no moving signal
- 5 seconds flicker twice indicate have signal but have not connect with the monitoring center.
- 5 seconds flicker three times indicate have signal and connect with the monitoring center.
- 10 seconds flicker fast after power on, continue flicker 4 times indicate can' t detect the card, need plug and insert card.



5.Specification

Terminal Property	
Terminal	Use Dual-core central processing chip
3G module	GSM communication module
Design	Battery protection
Circuit protection	Three anti-paint protection
Specification	
Working Voltage	10 ~ 60 V/DC
Highest Voltage	100V/DC
Storage Battery Voltage Protect	Lowest : 9V (12V Battery) or 20V(24V Battery) Highest : 60V
Anti-reverse Power	100V
Working current	Average:70mA@12V Saving mode current:20mA
Backup battery	320mAh
Dimensions	88x 62.5 x 32.5 mm (L x W x H)
Material	aluminium alloy
Unit net weight	0.26kg
Port	
GPS Antenna	SMA port : - 26dB
GSM Antenna	SMAport : - 3dB
Vehicle detecting port	9 signal input (including 1 route Mileage pulse)
Output	1 route low level: 250 mA @ DC 12V 3 route low level: 200 mA @ DC 12V
voice Interface	2 route
extra equipment power supply interface	2 route RS232 port, including output power DC5V/500mA
Environment features	
Vehicle spark noise immunity	Discharge voltage 10 kV~20 kV, discharge frequency 20 times/s~200 times/s
Electro-transient pulse noise immunity	4KV, experiment grade IV
Static discharge noise immunity	Contacting discharge 6KV, air discharge 8KV, experiment grade III
Conduction interference limits	Accord with the requirements of class B
Radiated interference limits	Accord with the requirements of class B
Temperature	Work: -30 ℃ ~ +70 ℃ Storage:-40 ℃ ~ +85 ℃
Humidity	5% ~ 95% Non-condensing
GPS Spec	
Sensitivity	- 159dBm
Locating Time	Cold start less 34 sec ,Hot start less 3.5sec ,Moderate Start less 33sec ,
Locating Accuracy	10m 2DRMS
Speed Accuracy	0.1M/sec



Data base accuracy	100M
Flash memory	
Blind area storage	Flash memory 1400 pcs locate data
Preset Road record	Flash memory 8 line road data

6.FAQ

No	State	Method	Remark
1	Device not display in the tracking platform	1、 Check IP ,PORT ,APN parameters 2 check vehicle data and terminal S/N , 3 Check SIMCARD has enough money or not or open GPRS service	
2	No GSM signal	1、 Check SIMCARD insert position correct or not 2、 Change another SIMCARD test 3、 SIMCARD is value SIMCARD or overdue	Some SIMCARD not open GPRS service ,so please make sure it open GPRS service first when put them in the cell phone ,then put them back to the device
3	There is device in the map ,but no detail position display	1.GPS don't locate ,There is no enough Satellite No ,please check GPS antenna position 2. Vehicle Data incorrect	
4	When engine off ,There is sound from Relay	The relay red wire and green wire connect wrong , please follow the wiring diagram reconnect	
5	There is no Speed and mileage data of device	1、 Check ACC wire connect 2、 Reconnect ACC wire	
6	SIMCARD less money ,but after recharge ,device still not online	1、 After recharge SIMCARD ,SIMCARD must login again Though center send command *#37# to device and restart.	
7	There is no CAR ID display when playing the video of the SD card	Before install the SD card ,please set up the vehicle ID data ,then when record data ,the CAR ID data will display	



7. Warranty

After Sale Service

This system has been tested before sold, we ensure it can work stable below low or high temperature .We strongly recommend you to get this system installed by professional. There is a one-year warranty except the following condition:

1. Installation, or connect wire broken by personally or unprofessional.
2. Warranty will eliminate if the ownership of the tracker has been changed.
3. Parts damaged or lost by man-made
4. Battery, adapter, wires, etc.

Warning: this device is just auxiliary a product that applying the location of current object, we have no responsibility if you have damage or lost in using this tracker.

Under the copyright laws, this manual may not be copied, in whole or in part, without the written consent of YUWEI

8. Contact Us:

Shenzhen Yuwei Information & Technology Development Co., Ltd

Address: Floor 6, Taike Building No.2 Taike Road, Futian district , Shenzhen China

Tel : 0755-83123345 Fax : 0755-53105544

Website : <http://www.yuweigps.com>